

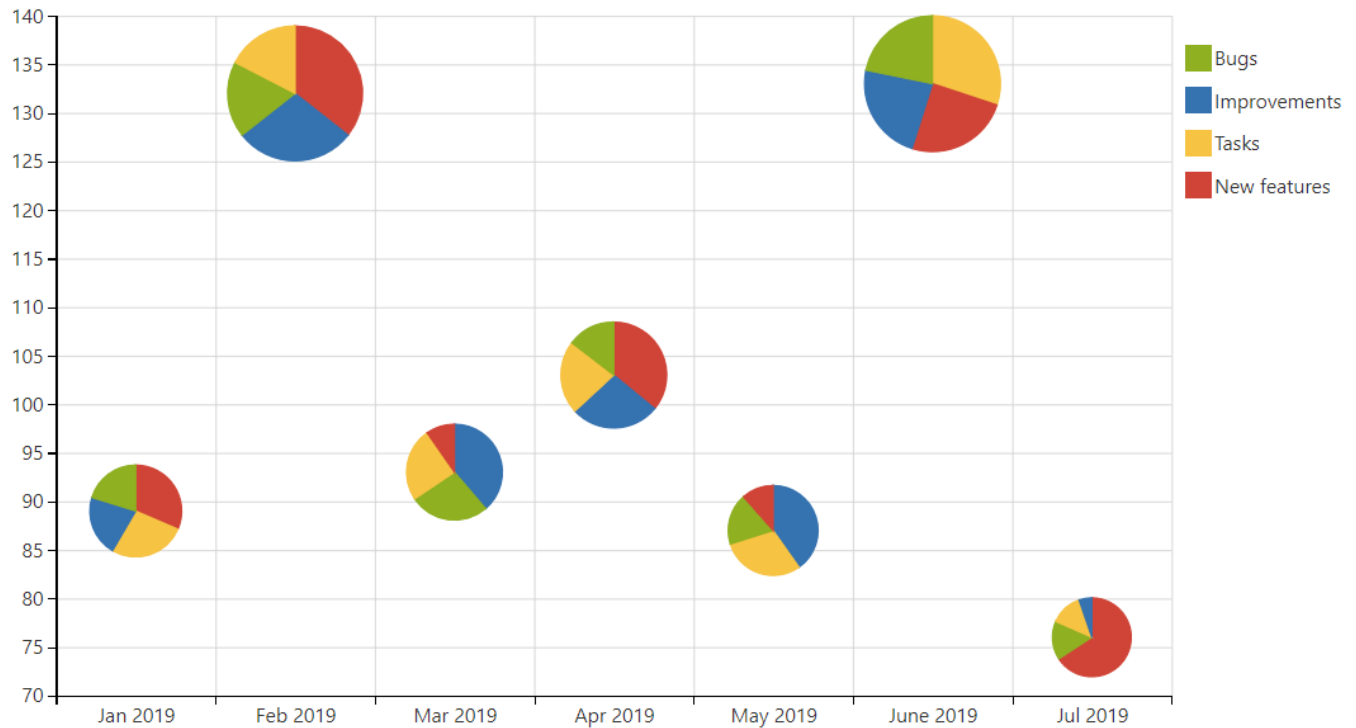
Bubble Pie chart type

On this page you will learn how to configure the Bubble Pie chart:

- [Settings Tab](#)
 - [Select the chart type](#)
 - [Select data series](#)
- [Adjustments Tab](#)
 - [Set the table data orientation](#)
 - [Set the decimal separator](#)
 - [Set the worklog settings](#)
 - [Set the date format](#)
 - [Set the minimal and maximal values](#)
 - [Set the scale step](#)
- [Look Tab](#)
 - [Set the height and width of the chart](#)
 - [Set colors](#)
 - [Align chart](#)
 - [Set the legend position](#)
 - [Show grid](#)
 - [Show/Hide source data](#)
 - [Hide chart controls](#)
 - [Set the chart title](#)
 - [Set axis labels](#)
 - [Show data labels](#)
 - [Filter the source table](#)

Example

Rendered Chart



Parameters in Macro Browser

Type	Bubble Pie
X-axis and Y-axis columns	Date, Total requests

Values column	Bugs, Improvements, Tasks, New features
----------------------	---

Data Table in Macro Placeholder

Date	Total requests	Bugs	Improvements	Tasks	New features
Jan 2019	89	18	19	24	28
Feb 2019	132	24	38	23	47
Mar 2019	93	25	36	23	9
Apr 2019	103	15	28	23	37
May 2019	87	16	35	26	10
June 2019	133	29	31	40	33
Jul 2019	76	12	4	10	50

Parameters

Settings Tab

Select the chart type

To select the chart type in the page view mode:

1. [Insert the Chart from Table macro](#).
2. Hover over the chart controls on the right of the table.
3. Locate the **Type** option and select the chart type. The chart will be automatically re-generated.
4. To save the modifications in the macro body, click the cogwheel icon and select **Save changes**.

To select the chart type in the macro browser:

1. Switch the page to the edit mode.
2. [Insert the Chart from Table macro](#) and paste the table within the macro body.
3. Select the macro and click **Edit**.
4. Locate the **Type** option in the **Settings** tab and select the chart type.
5. Save the macro and the page.

Select data series

X-axis and Y-axis columns - the columns containing **numerical values or dates** for chart generation (horizontal and vertical axis).

Values column - the column or columns containing **numerical values** for **Pie chart** generation.

To select data series in the page view mode:

1. [Insert the Chart from Table macro](#).
2. Hove over the chart controls on the right of the table.
3. Locate the **X-axis and Y-axis columns, Values column** option s and select the table columns containing data for chart generation. The chart will be automatically re-generated.
4. To save the modifications in the macro body, click the cogwheel icon and select **Save changes**.

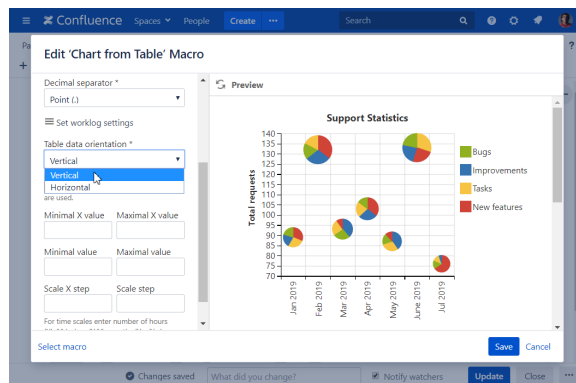
To select data series in the macro browser:

1. Switch the page to the edit mode.
2. Insert the [Chart from Table macro](#) and paste the table within the macro body.
3. Select the macro and click **Edit**.
4. Locate the **X-axis and Y-axis columns, Values column options** in the **Settings** tab and select the table columns containing data for chart generation.
5. Save the macro and the page.

Adjustments Tab

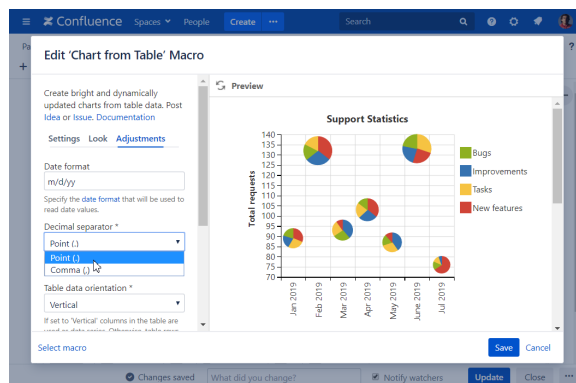
Set the table data orientation

1. Switch the page to the edit mode.
2. Select the macro and click **Edit**.
3. Switch to the **Adjustments** tab.
4. Locate the **Table data orientation** option.
5. Select the Vertical or Horizontal option.
6. Save the macro and the page.



Set the decimal separator

1. Switch the page to the edit mode.
2. Select the macro and click **Edit**.
3. Switch to the **Adjustments** tab.
4. Locate the **Decimal separator** option.
5. Specify the correct decimal separator for numeric values in the source table (point or comma).
6. Save the macro and the page.

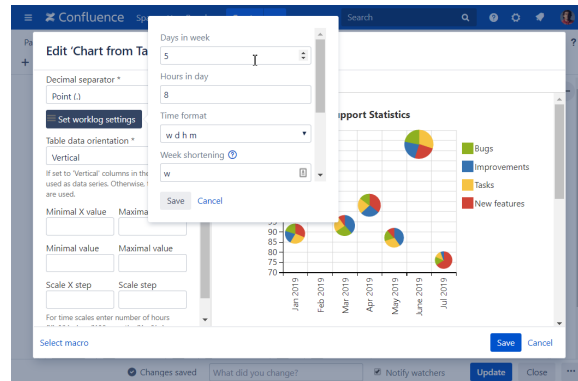


Set the worklog settings

i Please ensure that the worklog parameters set in the macro are identical to parameters configured in Atlassian JIRA.

1. Switch the page to the edit mode.
2. Select the macro and click **Edit**.

3. Switch to the **Adjustments** tab.
4. Click the **Set worklog settings** button.
5. In the opened form, define the worklog parameters, as follows:
 - a. **Days in week** - enter the number of business days in a week.
 - b. **Hours in day** - enter the number of working hours in one business day.
 - c. **Time format** - select the used time format in worklog values.
 - d. **Week shortening** - enter the shortening for the week time unit if you use any language different from English.
 - e. **Day shortening** - enter the shortening for the day time unit if you use any language different from English.
 - f. **Hour shortening** - enter the shortening for the hour time unit if you use any language different from English.
 - g. **Minute shortening** - enter the shortening for the minute time unit if you use any language different from English.
6. Save the macro and the page.

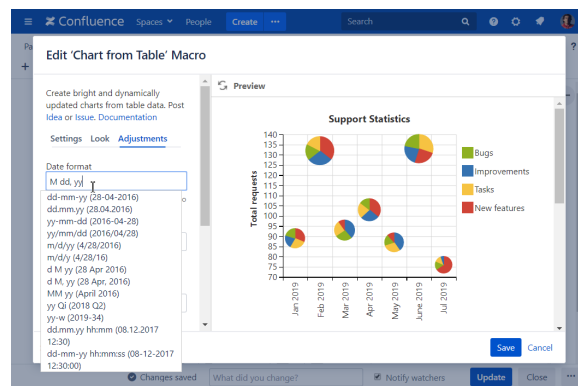


i Worklog time units in different languages are denoted with different shortenings. Please adjust them according to your JIRA localization settings.

Set the date format

1. Switch the page to the edit mode.
2. Select the macro and click **Edit**.
3. Switch to the **Adjustments** tab.
4. Locate the **Date format** option.
5. Specify the **correct date format** for date values in the source table.
6. Save the macro and the page.

i If the app detects the incorrect date format in the page view mode it presents you with the note panel where you can **enter the correct date format**. It is saved automatically if it is treated as the correct date format.

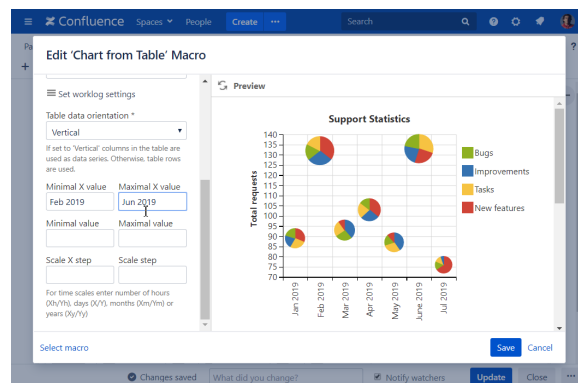


Set the minimal and maximal values

Minimal (X) value - the minimal value for showing only data values greater than the specified minimal value.

Maximal (X) value - You can specify the maximal value for showing only data values not greater than the specified maximal value.

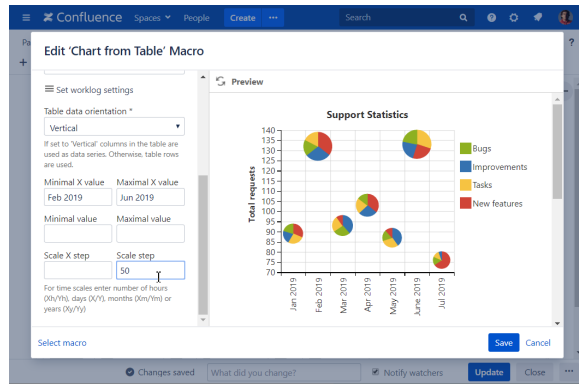
1. Switch the page to the edit mode.
2. Select the macro and click **Edit**.
3. Switch to the **Adjustments** tab.
4. Locate the **Minimal (X)** and **Maximal (X) value** options and set the values.
5. Save the macro and the page.



Set the scale step

Scale (X) Step - the required scale step of Y axis for showing the chart.

1. Switch the page to the edit mode.
2. Select the macro and click **Edit**.
3. Switch to the **Adjustments** tab.
4. Locate the **Scale (X) Step** options and set the scale step.
5. Save the macro and the page.



Look Tab

Set the height and width of the chart

1. Switch the page to the edit mode.
2. Select the macro and click **Edit**.
3. Switch to the **Look** tab.
4. Locate the **Height** and **Width** fields.
5. Enter the appropriate dimensions of the chart.
6. Save the macro and the page.

i To set the Height and Width of the chart in the page view mode:

1. Hover over the chart controls on the right of the table.
2. Locate the **Height** and **Width** fields.
3. Enter the appropriate dimensions of the chart.
4. To save the modifications in the macro body, click the cogwheel icon and select **Save changes**.

Set colors

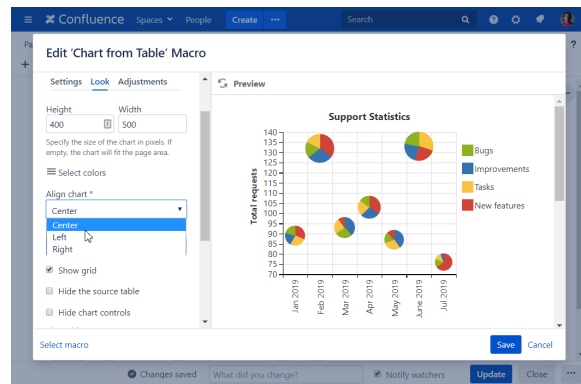
1. Switch the page to the edit mode.
2. Select the macro and click **Edit**.
3. Switch to the **Look** tab.
4. Locate the **Select colors** button and click it.
5. Select the appropriate colors for each label.
6. Save the macro and the page.

i To set the colors in the page view mode:

1. Hover over the chart controls on the right of the table.
2. Click the cogwheel icon, locate the **Select colors** option. After selecting colors click **Apply**. The chart will be automatically re-generated.
3. To save the modifications in the macro body, click the cogwheel icon and select **Save changes**.

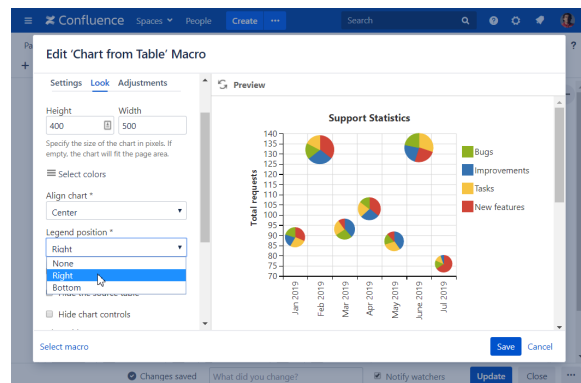
Align chart

1. Switch the page to the edit mode.
2. Select the macro and click **Edit**.
3. Switch to the **Look** tab.
4. Locate the **Align chart** option.
5. Select the appropriate chart alignment, as follows:
 - Left
 - Center
 - Right
6. Save the macro and the page.



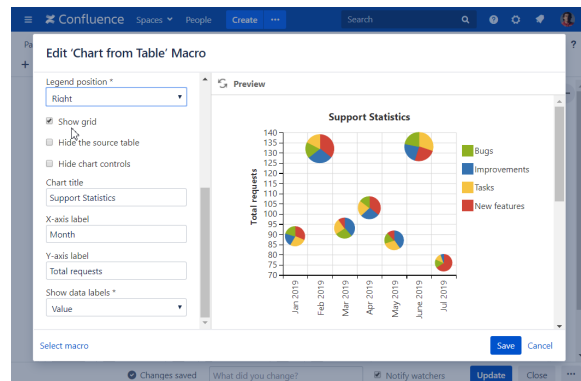
Set the legend position

1. Switch the page to the edit mode.
2. Select the macro and click **Edit**.
3. Switch to the **Look** tab.
4. Locate the **Legend position** option.
5. Select the appropriate legend position, as follows:
 - None
 - Right
 - Bottom
6. Save the macro and the page.



Show grid

1. Switch the page to the edit mode.
2. Select the macro and click **Edit**.
3. Switch to the **Look** tab.
4. Locate and enable the **Show grid** option.
5. Save the macro and the page.



Show/Hide source data

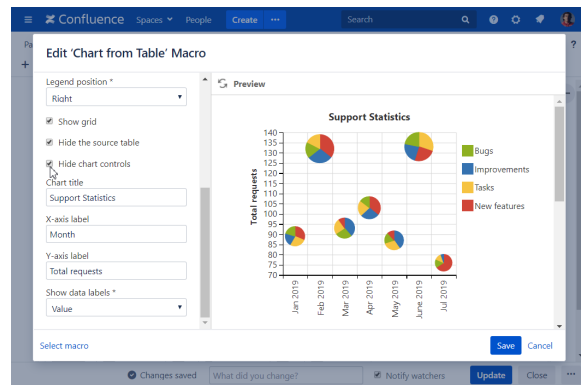
1. Switch the page to the edit mode.
2. Select the macro and click **Edit**.
3. Locate the **Source data** option and select the appropriate option, as follows:
 - Show all content
 - Hide tables
 - Hide all content
4. Save the macro and the page.

i To show/hide source data in the page view mode:

1. Hover over the chart controls on the right of the table.
2. Click the cogwheel icon, select the **Show source content, Hide source content (Hide tables, Hide all content)** option.
3. To save the modifications in the macro body, click the cogwheel icon and select **Save changes**.

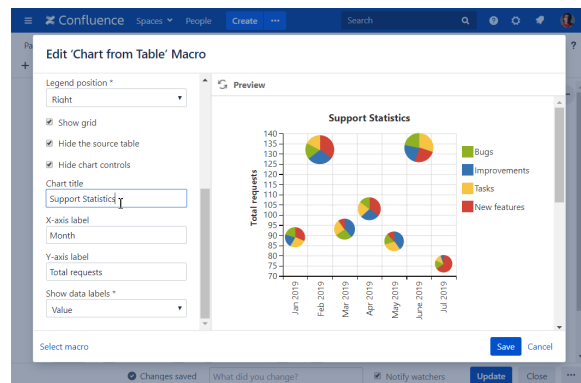
Hide chart controls

1. Switch the page to the edit mode.
2. Select the macro and click **Edit**.
3. Switch to the **Look** tab.
4. Locate and enable the **Hide chart controls** option.
5. Save the macro and the page.



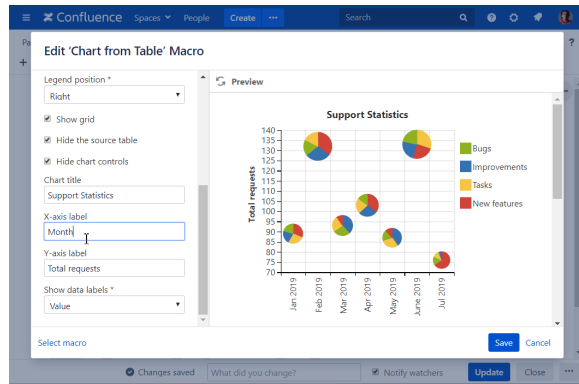
Set the chart title

1. Switch the page to the edit mode.
2. Select the macro and click **Edit**.
3. Switch to the **Look** tab.
4. Locate the **Chart title** option and enter the title.
5. Save the macro and the page.



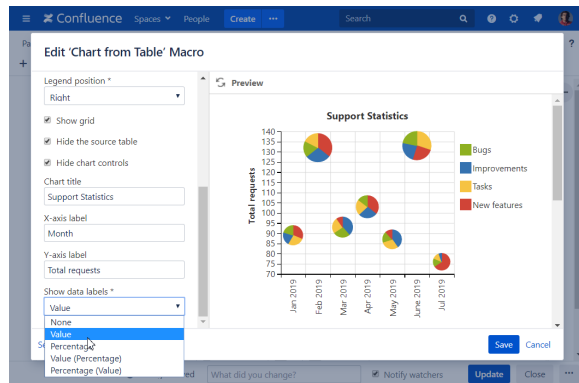
Set axis labels

1. Switch the page to the edit mode.
2. Select the macro and click **Edit**.
3. Switch to the **Look** tab.
4. Locate the **X-axis label** and **Y-axis label** options and enter the labels.
5. Save the macro and the page.



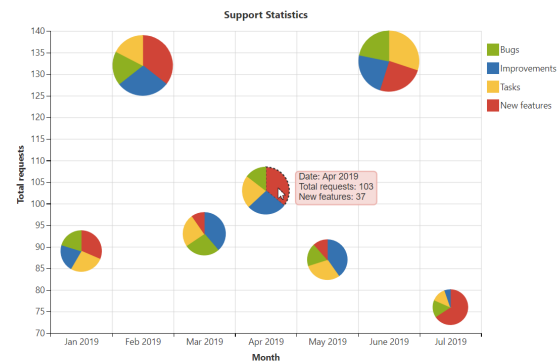
Show data labels

1. Switch the page to the edit mode.
2. Select the macro and click **Edit**.
3. Switch to the **Look** tab.
4. Locate the **Show data labels** option and select the appropriate option, as follows:
 - None
 - Value
 - Percentage
 - Value (Percentage)
 - Percentage (Value)
5. Save the macro and the page.



Filter the source table

1. Select one or more chart columns/sectors/bars.
2. Only the related rows of the source table are displayed.
3. Deselect all the columns/sectors/bars to display the whole source table.



Date	Total requests	Bugs	Improvements	Tasks	New features
Apr 2019	103	15	28	23	37